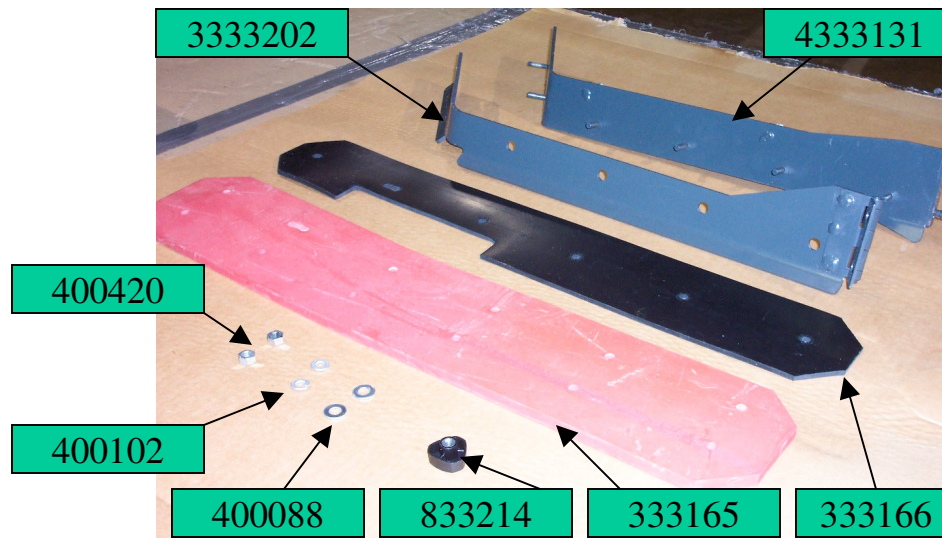
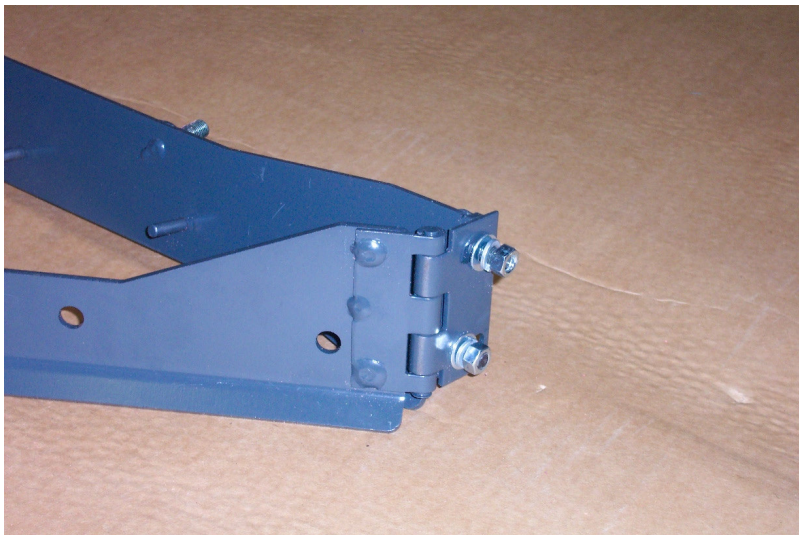


MODEL: 3880
DOCUMENTED BY: POWERBOSS
PAGE NUMBER: 1
DATE: JULY 10, 2003



MODEL: 3880
DOCUMENTED BY: POWERBOSS
PAGE NUMBER: 2
DATE: JULY 10, 2003



ATTACH WELD SQUEEGEE BLADE RH
(3333131) TO WELD-RETAINER RH
(3333202) USING:

3400420: NUT-HEX 5/16-24 ES
3400102: WASHER-LOCK
3400088: WASHER-FLAT

DO NOT TIGHTEN HARDWARE

MAKE SURE THAT IT CLOSES
TOGETHER PROPERLY BEFORE
PROCEEDING.

MODEL: 3880
DOCUMENTED BY: POWERBOSS
PAGE NUMBER: 3
DATE: JULY 10, 2003



ATTACH BLADE-SIDE SQUEEGEE (333165) TO
WELD SQUEEGEE BLADE RH (3333131).

MODEL: 3880
DOCUMENTED BY: POWERBOSS
PAGE NUMBER: 4
DATE: JULY 10, 2003



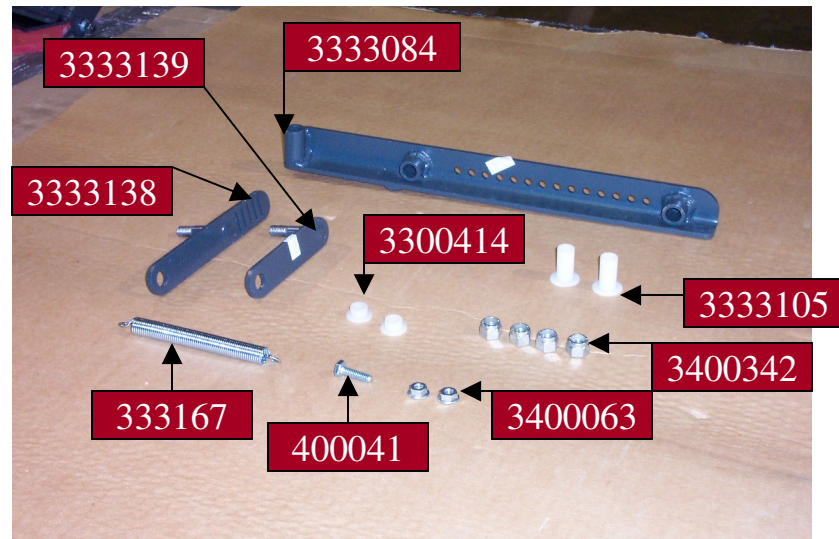
ATTACH STIFFNER-SQUEEGEE
BLADE (333166) TO WELD SQUEEGEE
BLADE RH (3333131).

MODEL: 3880
DOCUMENTED BY: POWERBOSS
PAGE NUMBER: 5
DATE: JULY 10, 2003



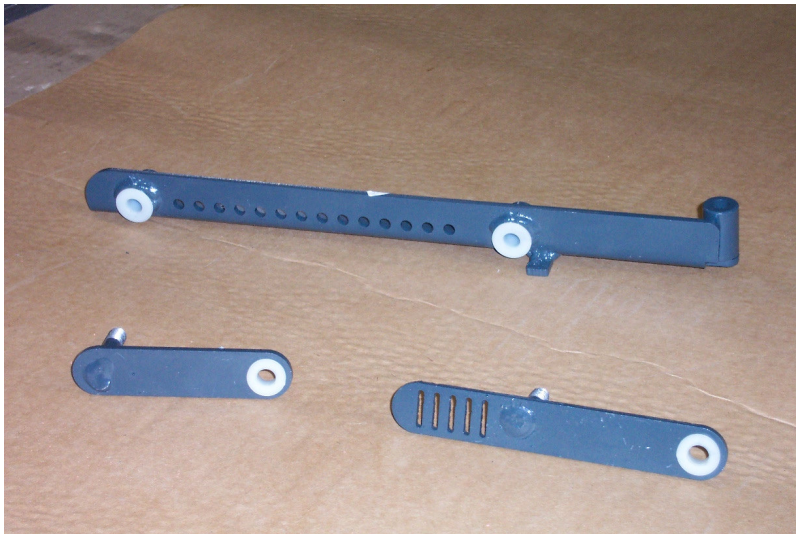
CLOSE WELD-RETAINER RH
(3333202) OVER THE SQUEEGEE
BLADES. (MAKE SURE THE PINS
ARE CENTERED IN THE HOLES.
TIGHTEN SCREWS WITH ½ INCH
WRENCH. ATTACH KNOB-3
SIDED (833214).

MODEL: 3880
DOCUMENTED BY: POWERBOSS
PAGE NUMBER: 6
DATE: JULY 10, 2003



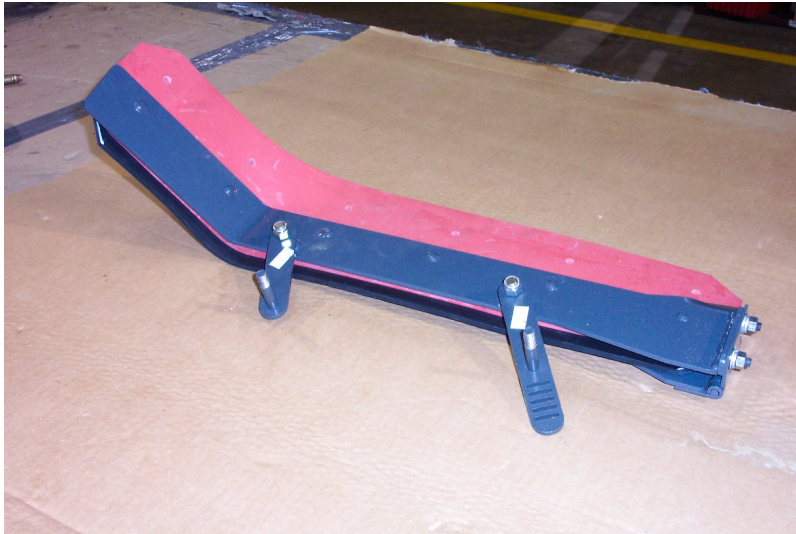
MODEL: 3880
DOCUMENTED BY: POWERBOSS
PAGE NUMBER: 7
DATE: JULY 10, 2003

TOOLS: HAMMER



ATTACH 2EA. BUSHING-3/8 NYLON (3333105) TO WELD-SQUEEGEE ARM RH (333084). ATTACH 1EA. BUSHING-NYLON 3/8 TO WELD-ARM (333139) AND 1EA. BUSHING-NYLON 3/8 TO WELD-ARM (333138).

MODEL: 3880
DOCUMENTED BY: POWERBOSS
PAGE NUMBER: 8
DATE: JULY 10, 2003



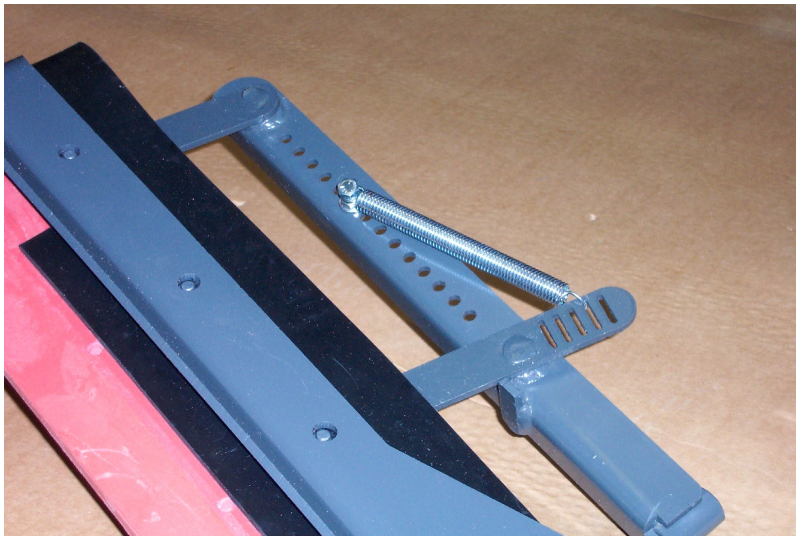
ATTACH 333138 AND 333139 TO 333131
AND SECURE WITH 2EA. NUT-HEX
3/8-24 (400342).

MODEL: 3880
DOCUMENTED BY: POWERBOSS
PAGE NUMBER: 9
DATE: JULY 10, 2003



ATTACH WELD-SQUEEGE ARM RH
(333084) TO THE END OF 333138 &
333139 AND SECURE WITH 2EA NUTS
(400342).

MODEL: 3880
DOCUMENTED BY: POWERBOSS
PAGE NUMBER: 10
DATE: JULY 10, 2003



ATTACH SPRING-EXTENSION SIDE
SQUEEGEE (333167) TO WELD ARM (333138)
AND WELD-SQUEEGEE ARM (333084).
SECURE WITH SCR-HEX,1/4-20X0.88 ZP
(3400041) AND 2EA. NUT-FLANGE LOCK
1/4-20 ZP (3400063).

COMPLETE